

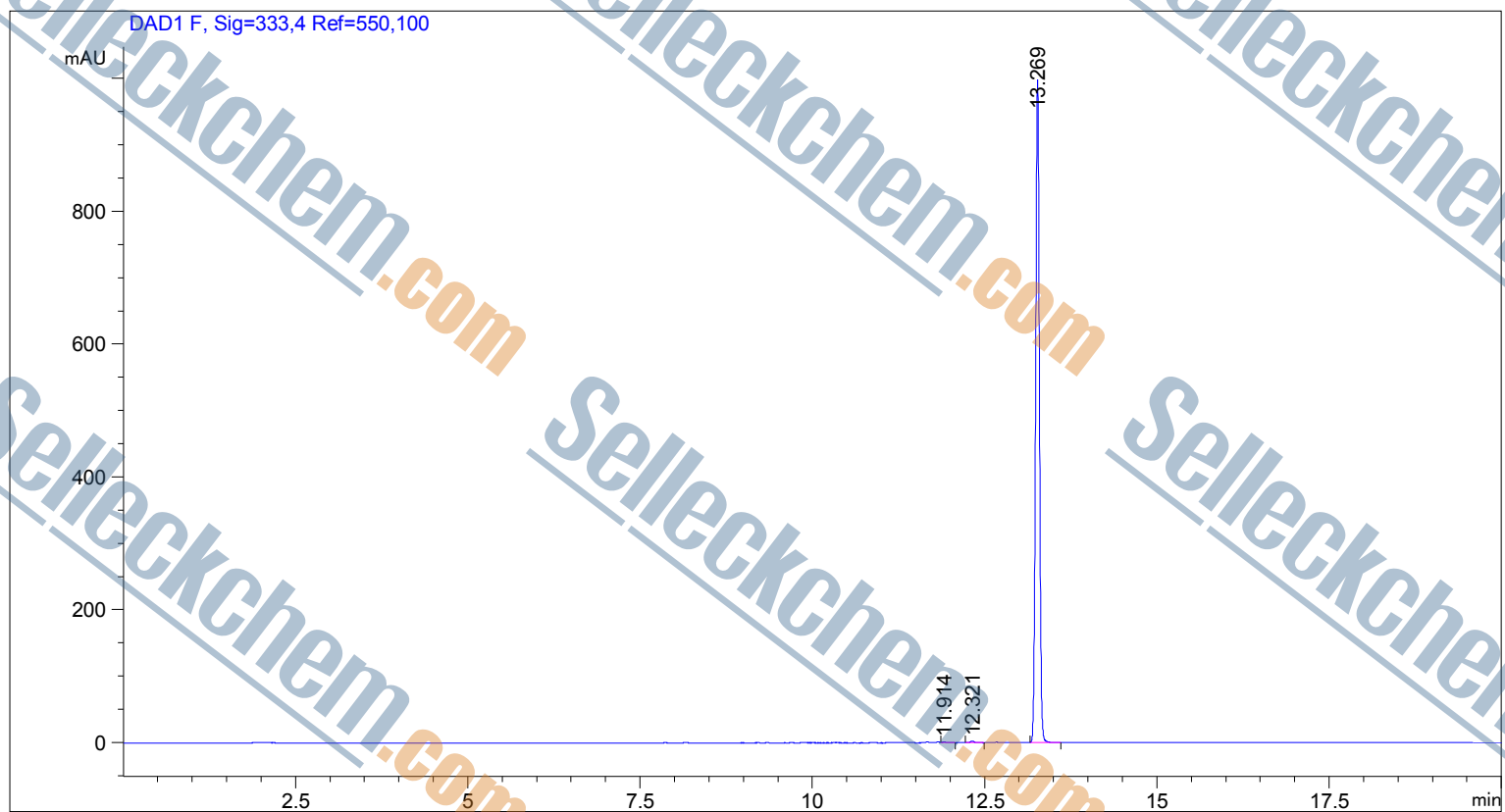
=====

Acq. Operator : SYSTEM  
Acq. Instrument : 12601c

Seq. Line : 2  
Location : Vial 27

Inj Volume : 2.000 µl

Different Inj Volume from Sample Entry! Actual Inj Volume : 1.500 µl



=====  
Area Percent Report  
=====

Sorted By : Signal  
Multiplier : 1.0000  
Dilution : 1.0000  
Use Multiplier & Dilution Factor with ISTDs

Signal 1: DAD1 F, Sig=333,4 Ref=550,100

Peak #	RetTime [min]	Type	Width [min]	Area [mAU*s]	Height [mAU]	Area %
1	11.914	VB	0.0653	5.40358	1.25383	0.1412
2	12.321	BB	0.0600	9.30223	2.35899	0.2430
3	13.269	VB	0.0590	3812.63794	998.89148	99.6158

Totals : 3827.34375 1002.50430

=====  
\*\*\* End of Report \*\*\*