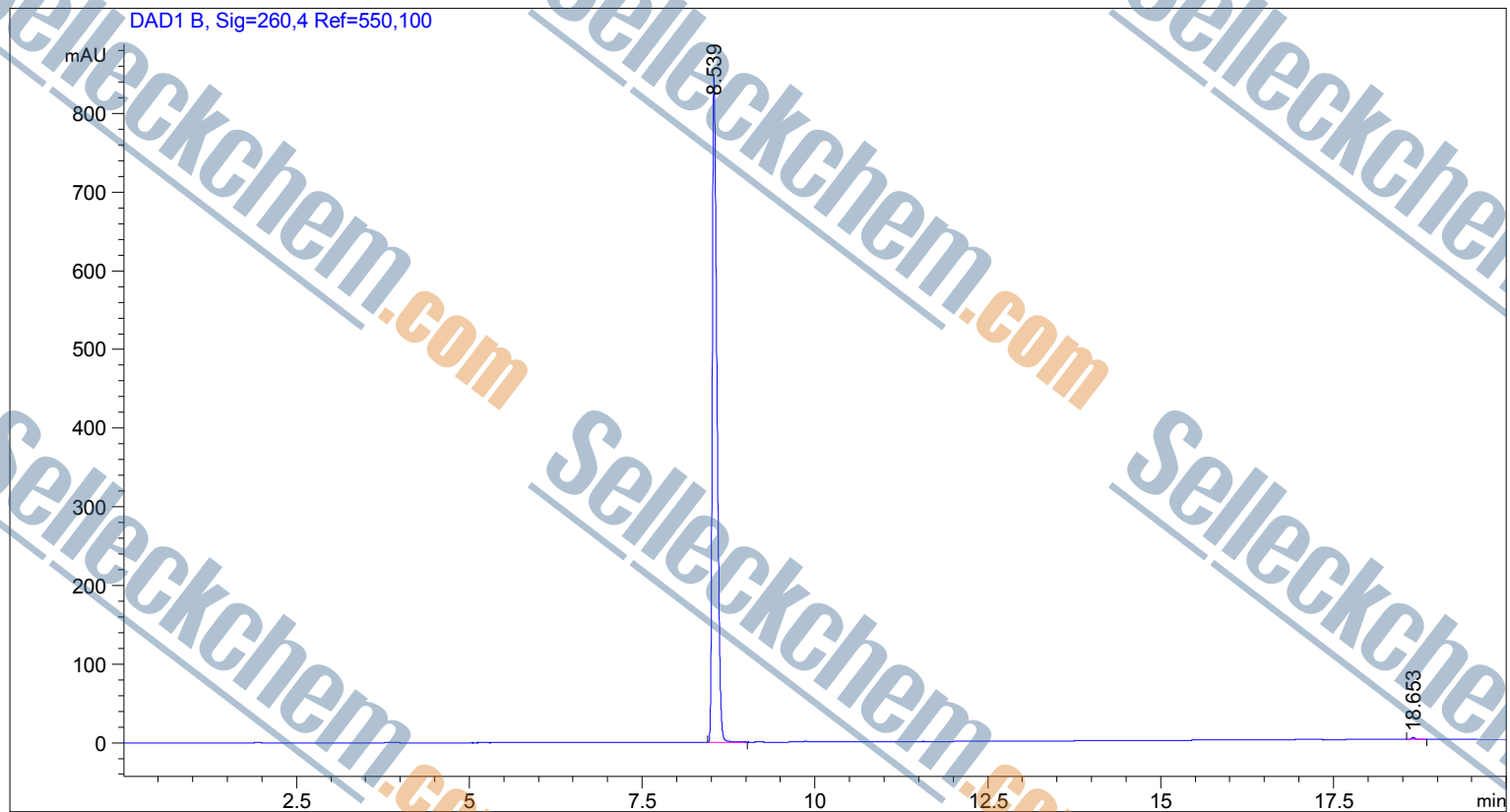


=====
Acq. Operator : SYSTEM
Acq. Instrument : 12601c

Seq. Line : 1
Location : Vial 65

Inj Volume : 2.000 µl



=====
Area Percent Report
=====

Sorted By : Signal
Multiplier : 1.0000
Dilution : 1.0000
Use Multiplier & Dilution Factor with ISTDs

Signal 1: DAD1 B, Sig=260,4 Ref=550,100

Peak #	RetTime [min]	Type	Width [min]	Area [mAU*s]	Height [mAU]	Area %
1	8.539	BB	0.0726	3991.36768	845.71332	99.7928
2	18.653	BB	0.0557	8.28562	2.26458	0.2072

Totals : 3999.65330 847.97790

=====
*** End of Report ***