

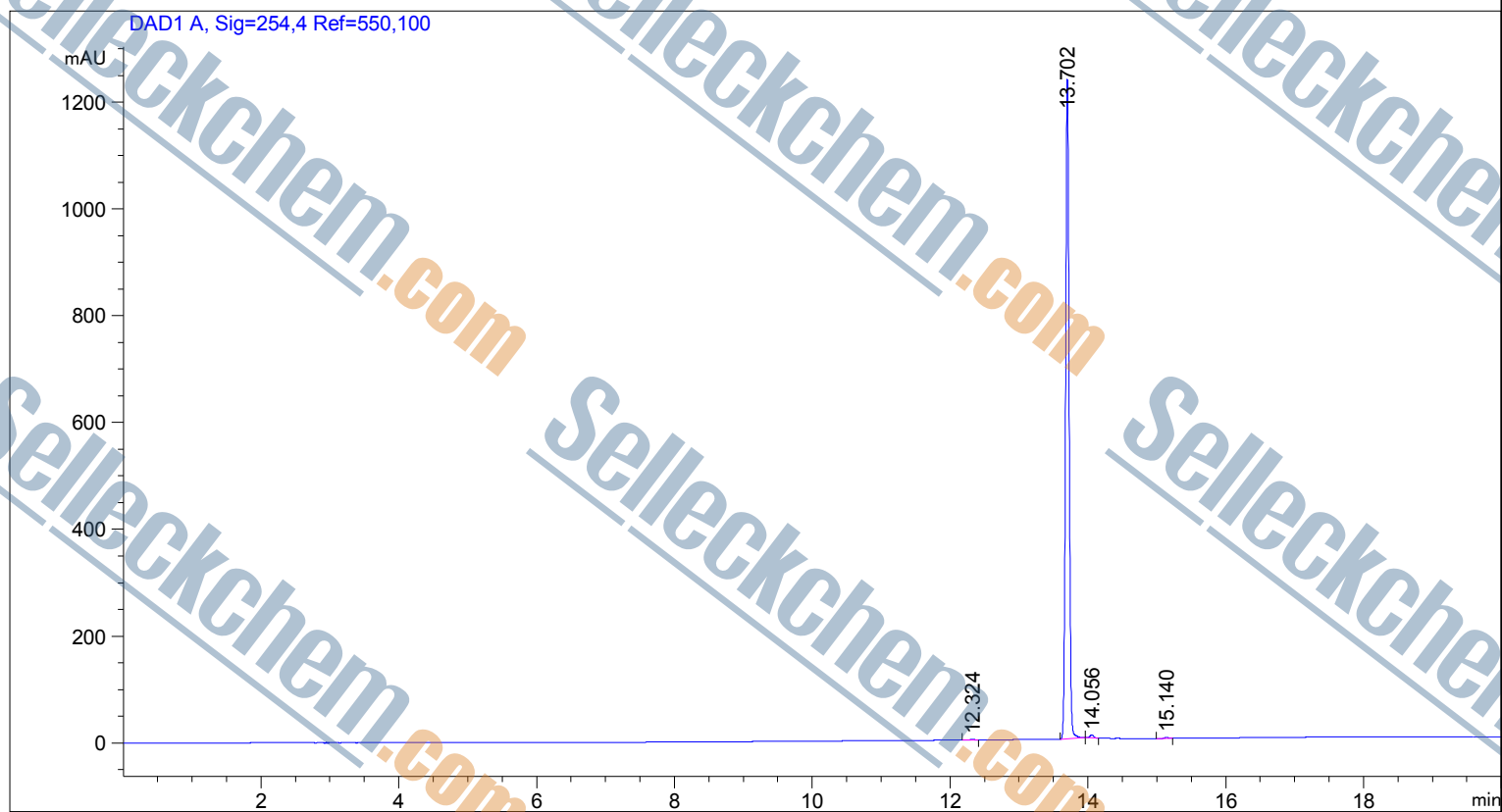
=====

Acq. Operator : SYSTEM  
Acq. Instrument : 12601c

Seq. Line : 2  
Location : Vial 24

Inj Volume : 2.000 µl

Different Inj Volume from Sample Entry! Actual Inj Volume : 1.000 µl



=====  
Area Percent Report  
=====

Sorted By : Signal  
Multiplier : 1.0000  
Dilution : 1.0000  
Use Multiplier & Dilution Factor with ISTDs

Signal 1: DAD1 A, Sig=254,4 Ref=550,100

Peak #	RetTime [min]	Type	Width [min]	Area [mAU*s]	Height [mAU]	Area %
1	12.324	BB	0.0616	5.68888	1.42565	0.1289
2	13.702	BB	0.0554	4380.64502	1234.97559	99.2577
3	14.056	BB	0.0545	19.95087	5.60716	0.4521
4	15.140	BB	0.0517	7.12300	2.14891	0.1614

Totals : 4413.40777 1244.15731

=====