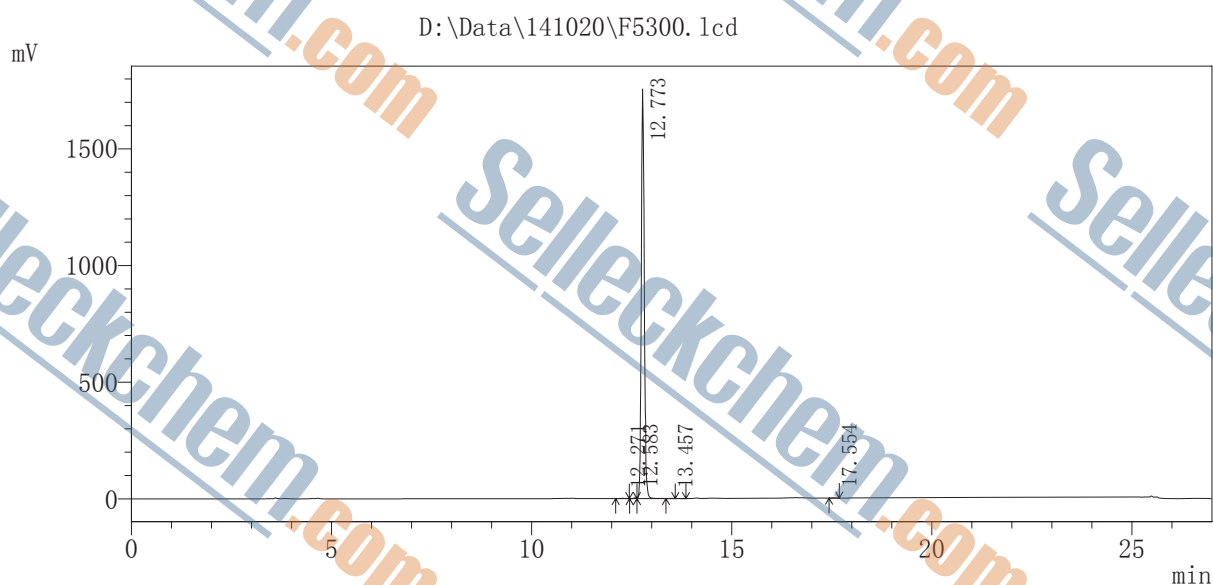


# ====LC solution Report====

Sample Name : F5300 S100828 AZD6244 (Selumetinib)

Injection Volumm : 20 uL

Analysis Method : Method of 10-100-100-10-1.0.lcm



< Result >

Order	RetTime	Area	Height	Area %	Resolution
1	12.3	8067	1528	0.088	0.000
2	12.6	16398	3478	0.179	2.006
3	12.8	9130531	1755958	99.639	1.225
4	13.5	4415	873	0.048	4.546
5	17.6	4187	671	0.046	25.058
Total		9163598	1762508	100.000	