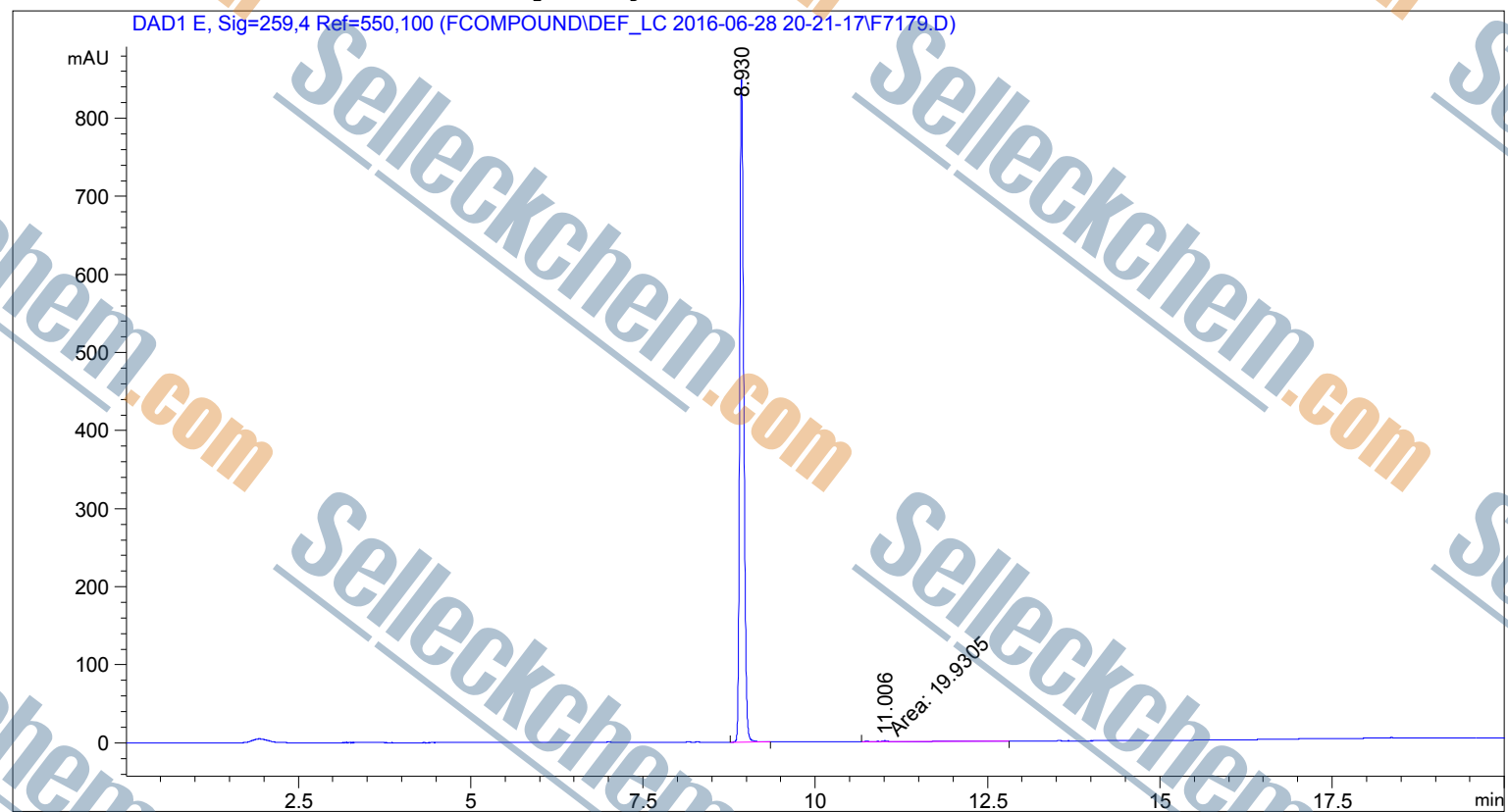


Sample Name: F7179 S781002 Afatinib dimaleate

=====

Acq. Operator	: SYSTEM	Seq. Line	: 2
Acq. Instrument	: 12601c	Location	: Vial 67
Injection Date	: 6/28/2016 8:44:15 PM	Inj	: 1
		Inj Volume	: 2.000 µl
Different Inj Volume from Sample Entry! Actual Inj Volume : 0.600 µl			
Method	: C:\CHEM32\1\DATA\FCOMPOUND\DEF_LC 2016-06-28 20-21-17\TEST12.M (Sequence Method)		
Last changed	: 6/28/2016 8:21:27 PM by SYSTEM		
Additional Info	: Peak(s) manually integrated		

=====



=====

Area Percent Report

=====

Sorted By : Signal
Multiplier : 1.0000
Dilution : 1.0000
Use Multiplier & Dilution Factor with ISTDs

Signal 1: DAD1 E, Sig=259,4 Ref=550,100

Peak #	RetTime [min]	Type	Width [min]	Area [mAU*s]	Height [mAU]	Area %
1	8.930	BB	0.0633	3473.95264	848.63263	99.4296
2	11.006	MM	0.2961	19.93049	1.12192	0.5704

Totals : 3493.88313 849.75455

=====

*** End of Report ***