

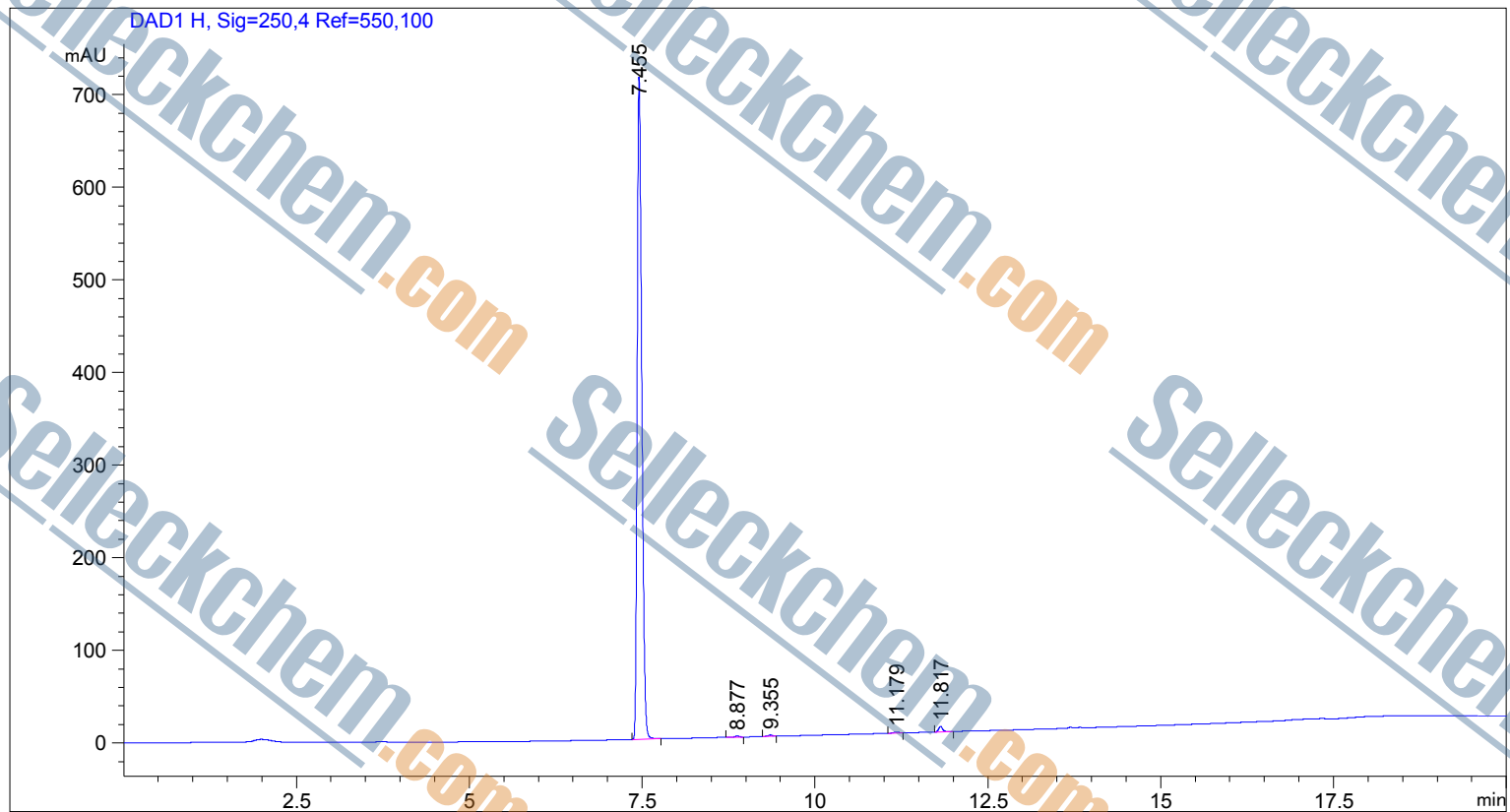
=====

Acq. Operator : SYSTEM
Acq. Instrument : 12601c

Seq. Line : 2
Location : Vial 56

Inj Volume : 2.000 µl

Additional Info : Peak(s) manually integrated



=====
Area Percent Report
=====

Sorted By : Signal
Multiplier : 1.0000
Dilution : 1.0000
Use Multiplier & Dilution Factor with ISTDs

Signal 1: DAD1 H, Sig=250,4 Ref=550,100

Peak #	RetTime [min]	Type	Width [min]	Area [mAU*s]	Height [mAU]	Area %
1	7.455	BB	0.0710	3311.00659	715.27728	99.0590
2	8.877	BB	0.0721	5.93391	1.22216	0.1770
3	9.355	BB	0.0606	5.82678	1.44226	0.1738
4	11.179	BB	0.0761	5.97985	1.19014	0.1784
5	11.817	BB	0.0616	13.86621	3.91545	0.4119

Totals : 3352.61334 725.04729

=====
*** End of Report ***