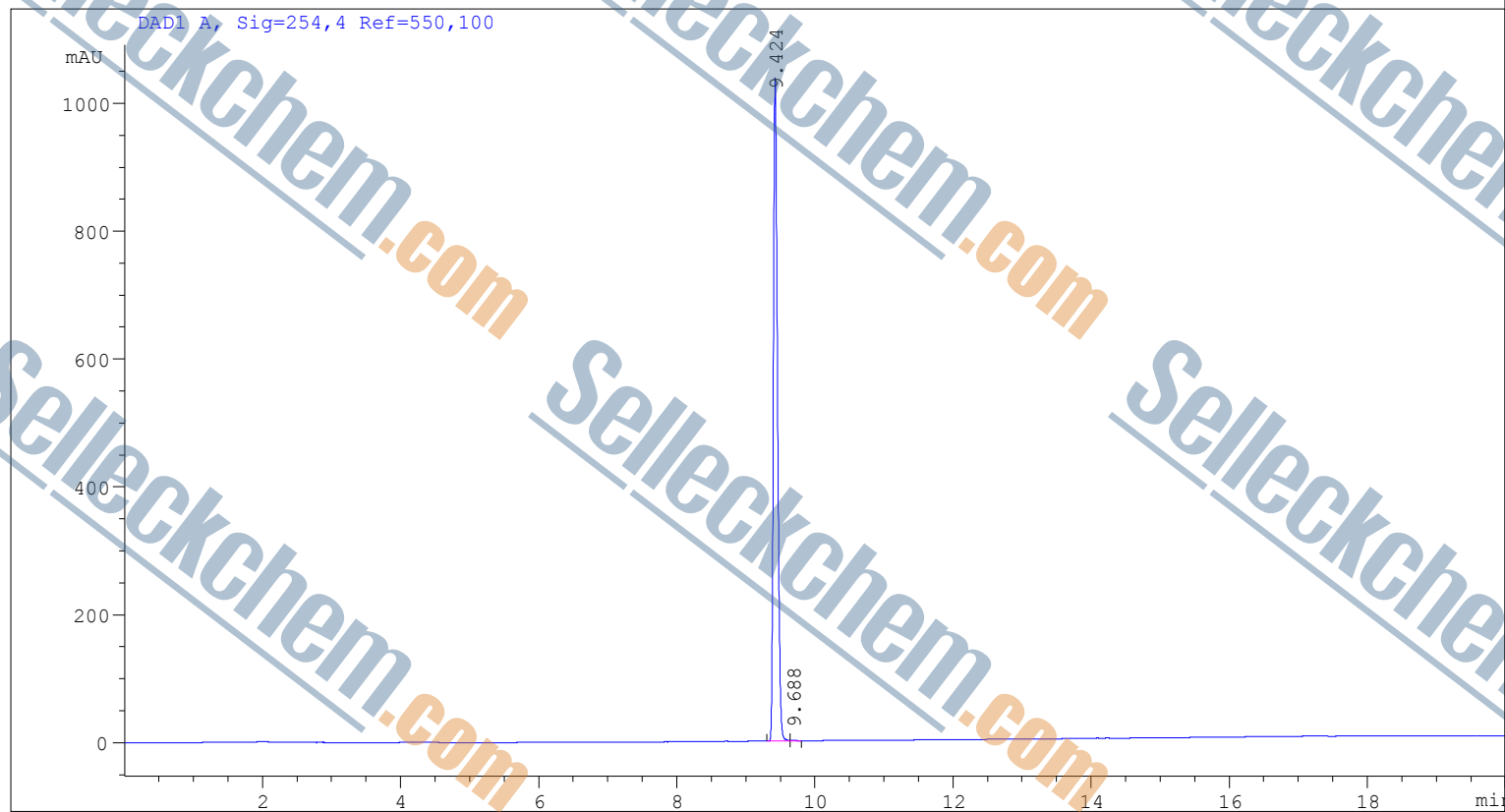


=====

Acq. Operator	: SYSTEM	Seq. Line	: 8
Acq. Instrument	: 12601c	Location	: Vial 18
		Inj Volume	: 2.000 µl
Different Inj Volume from Sample Entry!		Actual Inj Volume	: 3.000 µl

Additional Info : Peak(s) manually integrated



=====
Area Percent Report
=====

Sorted By : Signal
Multiplier : 1.0000
Dilution : 1.0000
Use Multiplier & Dilution Factor with ISTDs

Signal 1: DAD1 A, Sig=254,4 Ref=550,100

Peak #	RetTime [min]	Type	Width [min]	Area [mAU*s]	Height [mAU]	Area %
1	9.424	BV	0.0637	4292.30615	1037.91321	99.8745
2	9.688	VB	0.0701	5.35080	1.03804	0.1255

Totals : 4297.65695 1038.95125

=====
*** End of Report ***